

IEC 61850 Substation – Ores

Challenges

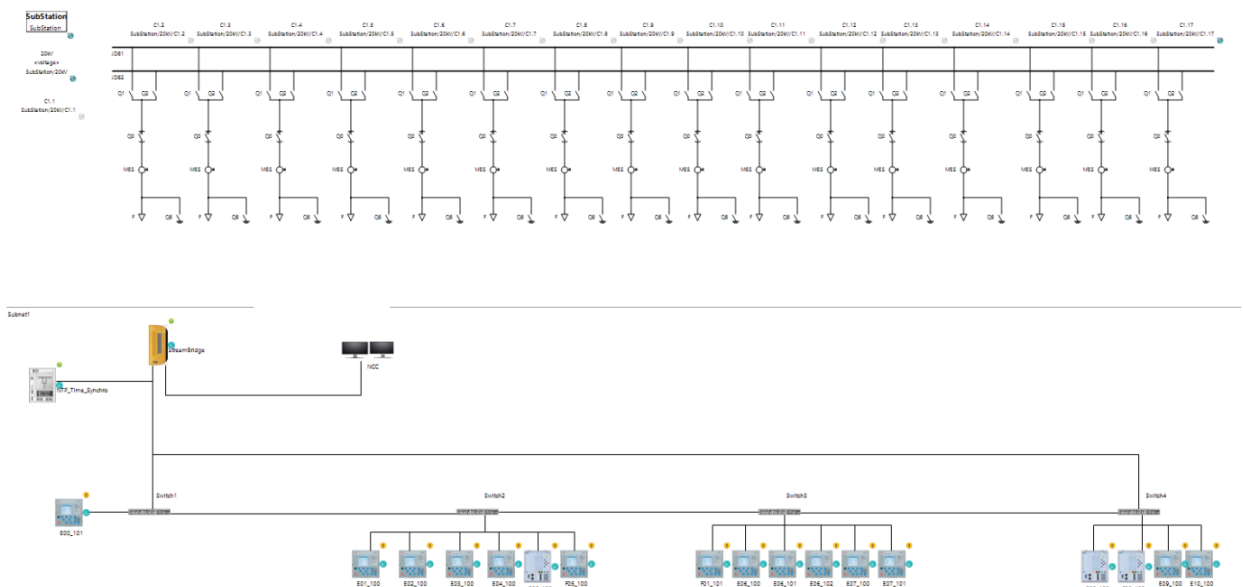
Ores uses our **Helinks STS-SD configuration tool** to perform the **61850 engineering** of their substations. This tool allows them to build several substations per year by standardising engineering concepts. As the tool is multi-vendor, it allows them to build substations with IEDs from different suppliers such as ABB, Siemens, Schneider or GE.

It also uses **our XPG communication gateways** to feed back the process data to their control centre.

→ Elvexys' Solutions & Services

- Supply of the **Helinks STS-SD tool**
- **Training and support** in the use of the **Helinks STS-SD tool**
- Supply of **XPG gateways**
- **XPG gateways configuration training and support**

Schematic



Why choose Elvexys?

- ✓ Reusability of 61850 engineering concepts defined on several substations
- ✓ Optimised gateway configuration
- ✓ Fast and vendor-independent IED configuration

Hardware & Software

Helinks STS-SD

Helinks STS-SD is the StreamX plugin for Helinks STS, an Independent IEC 61850 engineering tool, which improves the possibilities for maintenance and subsequent modifications.

StreamTools

This engineering tool is deployed at Elvexys in accordance with a strict security policy, including secure access for users. StreamTools includes uniqueness, version management, locking and rights mechanisms to manage simultaneous user access.

StreamConsole

The management console is the real companion of the commissioning engineer. Providing an efficient way to execute configuration, tests and maintenance tasks. It can be securely executed from remote and therefore has been approved for the highly secured OPC UA environment.

XPG Gateways

XPG is a modular multi-protocol communication gateway that runs on ISOS (Industrial Secure Operating System), both engineered and designed by Elvexys. It is also a chosen hardware which is used for all communication applications, data processing and protocol conversion.

Standards

- IEC 60870-5-104
- IEC 61850
- SNMP V3