

LoRaWAN[®] solution for water networks

LoRaWAN[®] technology simplifies data transfer. In this sense, it responds to many problems encountered in the field of utilities.

Every day, the planning, management and maintenance of the infrastructure needed to produce electricity represents hundreds of thousands of values to extract and process.

By allowing an accurate and regular reading, the LoRaWAN[®] solution proposed by Elvexys offers a **simple, economical and durable solution for the recovery of its data**. In addition, and thanks to its know-how, Elvexys has designed it so that it is **perfectly compatible with the use of other technologies**.



Radio modulation
technology



Long range,
low power IoT
network protocol



Transmission on free
frequency bands

Applications

- Measurement in isolated areas: reservoir level, source flow, pressures within the distribution network
- Remote meter reading
- Retrofit of Drive-By systems (w-Mbus)
- Remote control of water treatment equipment

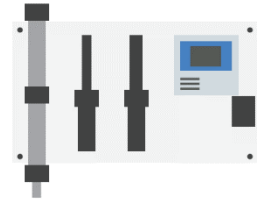
The advantages of LoRaWAN[®] with Elvexys

- Reduced costs
- Integration with invoicing software (e.g. Innosolv is-e)
- Detection of abnormal consumption: leaks pool filling, watering
- Possibility to operate your own remote reading radio network
- No contractual obligations with a telecommunication operator
- Scalability: remote reading of counting data
- Elvexys as a single point of contact for each step of the project from data acquisition to maintenance

Quality measurement

Application: Scada, BI

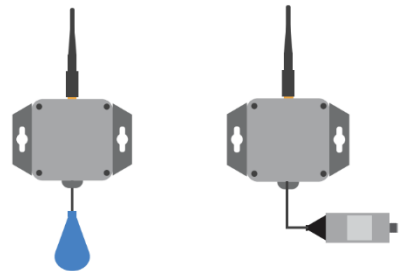
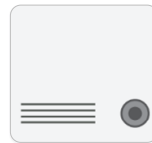
- Transfer of quality measurements from specialized equipment e.g. free chlorine, turbidity, etc.



Tank and surroundings measurement

Application: Scada

- Continuous level measurement 0-6 m
- Leak detection by hygrometry
- Frost detection (temperature)



Debit metry

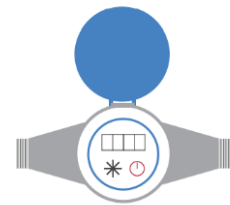
- GWF counter support, data transfer every 15 minutes
- On pulse counter (REED contact), 10-minute time step



Remote meter reading

Application: XML billing

- Pressure and flow data feedback in harsh environments
- Retrofit of Drive-By system



W-Mbus LoRa gateway

Application: Scada

- Pressure and flow data feedback in harsh environments
- Retrofit of Drive-By system